

SCHEDULES

PLUMBING FIXTURE CONNECTION SCHEDULE					
FIXTURE DESCRIPTION	FIXTURE NOTE	DCW	DHW	SW	VENT
AIR CONDITIONER-1,2,3&4	AC-1,2,3&4			¾"	
AIR CONDITIONER-A,B,C&D	AC-A,B,C&D			¾"	

NOTE
CONDENSATE PUMP W/ DRAIN TRAP
INSTALL PER MANUFACTURE RECOM
CONDENSATE PUMP W/ DRAIN TRAP
INSTALL PER MANUFACTURE RECOMMENDATION

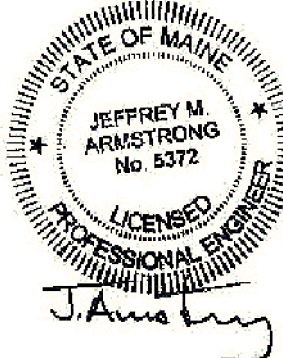


Armstrong Engineering
Mechanical Electrical Design Consultants
94 Presque Isle Street, Fort Fairfield, Maine 04742
Phone (207) 473-7117 Fax (207) 476-5621

Copyright 2019 by
Armstrong Engineering
All Rights Reserved
No part of this publication may be reproduced, stored in a retrieval system, or transmitted, in any form or by any means, electronic, mechanical, photocopying, recording, or by any information storage and retrieval system, without the prior written permission of Armstrong Engineering.

- ☐ FOR PRELIMINARY REVIEW
- ☒ FOR PROJECT BIDDING
- ☐ FOR PROJECT CONSTRUCTION
- ☐ RECORD DRAWINGS

DETAILS



NMCC-CHRISTIE BUILDING.
PRESQUE ISLE, MAINE
NURSING / CLASSROOM
AIR CONDITIONING

REV	DATE	DESCRIPTION

SHEET TITLE:

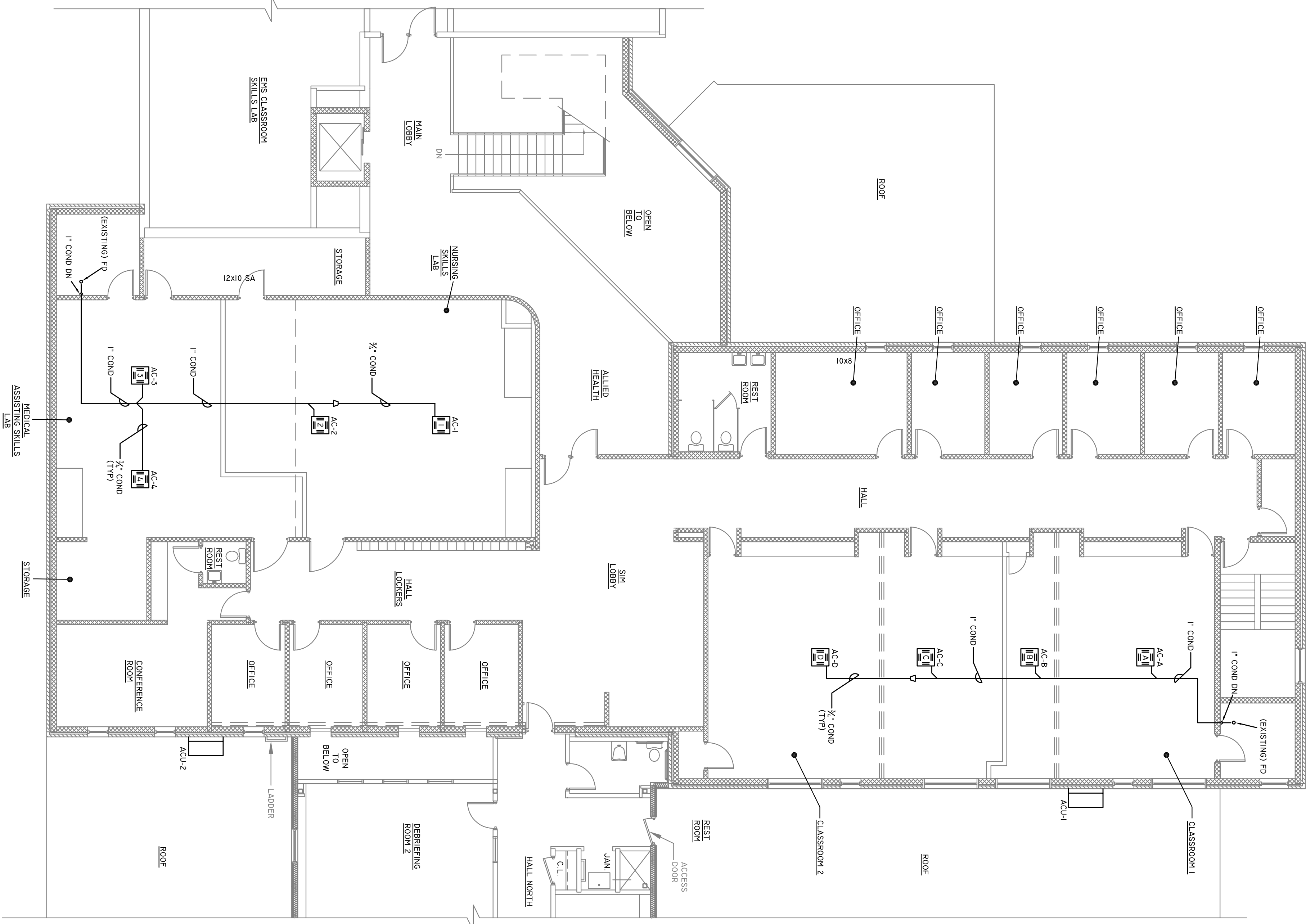
PLUMBING PLAN

APRIL 02, 2019

SCALE-AS NOTED

P-1

BREM PROJECT#: PT3054
AE PROJECT#: 1902-18



SECOND FLOOR PLAN
SCALE: 1/8"=1'-0"